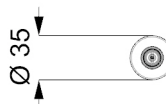
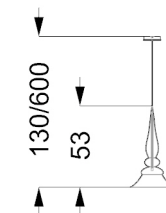
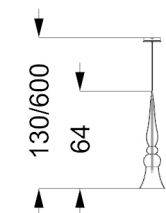


PALAZZO DUCALE SOSPENSIONE

DISEGNO REFLEX

mc kg



Lampade a sospensione composta da elementi in cristallo trasparente inciso con dettaglio colorato in ambra, rosso, blu, verde o acquamarina. Supporto in acciaio lucido. Impianto luce a LED (6W E27 110-240V)

Suspension lamps composed by elements in engraved transparent crystal with coloured detail in amber, red, blue, green or aquamarine. Support in polished steel. Led lighting system. (6W E27 110-240V)

Hängelampen mit Elementen aus graviertem Kristall transparent mit farbiger Detail in amber, rot, blau, grün oder Aquamarin. Träger aus poliertem Edelstahl. LED Lichtanlage. (6W E27 110-240V)

Lampes à suspension composé d'éléments en cristal gravé transparent avec détail en couleur ambre, rouge, bleu, vert ou aigue-marine. Support en acier brillant. Eclairage à LED (6W E27 110-240V)

MISURE STANDARD/STANDARD SIZE/STANDARDGRÖSSEN/MESURES STANDARDS

Ø 20 x 64 (130/600max) h

Ø 35 x 53 (130/600max) h