



- Adjustable projector for installation on ceiling, wall or floor.
- Configuration: die-cast aluminium structure, EN AB-47100 alloy (low copper content) and AISI 316L fixing plate. Glass diffuser: extra clear with silkscreen border, fixed to the aluminium through a robotic gluing system. The wiring unit and the emitting unit are connected by an adjustable junction.
- Double layer coating for high resistance to corrosion: the aluminium components are painted with a double coat using powders which are compliant with QUALICOAT standards: a first layer of epoxy powder (with excellent chemical and mechanical resistance) and a second finishing layer of polyester powder (resistant to UV rays and atmospheric agents). The entire painting process of the aluminium fitting starts from components which have been sand-blasted in advance to make the surface more porous and increase the adherence of the paint. Ares effects alkaline and acid washing to clean the surfaces completely, then rinses with demineralised water to remove any residue particles, subsequently a chemical conversion treatment is done to protect against rusting.
- Protection rating: IP65.
- In compliance with EN60598-1 standards.
- Class of insulation: I.
- Installation: the luminaire is for direct connection to 220-230V with a LED module set to work directly connected to the mains. The luminaire is equipped with an AISI316L stainless steel fixing plate for installation on surface and IP68 connector (6\times8mm cable). Ground spike available on request.

EU Regulation 874/2012 - Illumination equipment energy classes

A++
A+
A

LED VERSION:
Class A/A+/A++
Luminaire supplied with integrated LED modules that cannot be replaced



Floor installation



Wall fitting

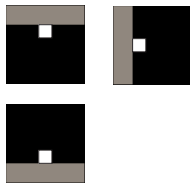


Ceiling fitting

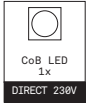
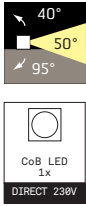
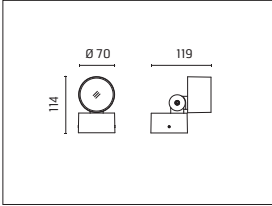
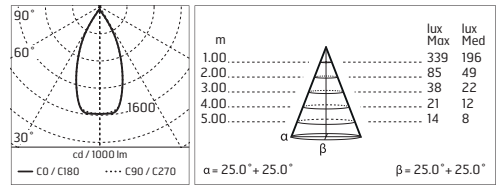


Protection against impact
IK 06 - 1,00 joule

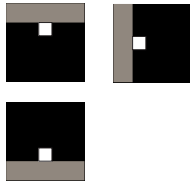
Kirk70 CoB LED / Adjustable - Wide Beam 50° - Direct 230V



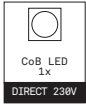
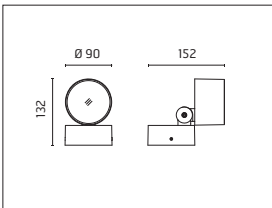
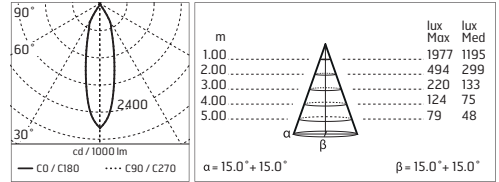
540001.A A+ A++
 WARM WHITE 3000K
 CoB LED
 4,5W/220÷240V
 Total power 6W
 lm LED 350 ≠ lm OUTPUT 244
 CRI >80
 LED module set up to work directly connected to the mains



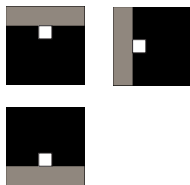
Kirk90 CoB LED / Adjustable - Medium Beam 30° - Direct 230V



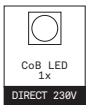
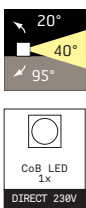
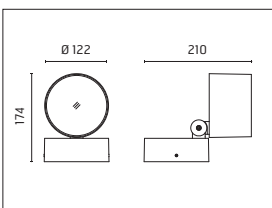
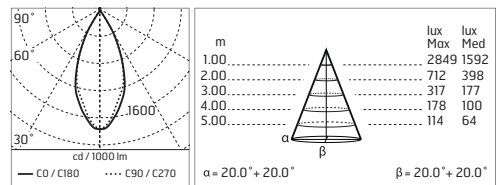
540002.A A+ A++
 WARM WHITE 3000K
 CoB LED
 10W/220÷230V
 Total power 12W
 lm LED 951 ≠ lm OUTPUT 713
 CRI >80
 LED module set up to work directly connected to the mains

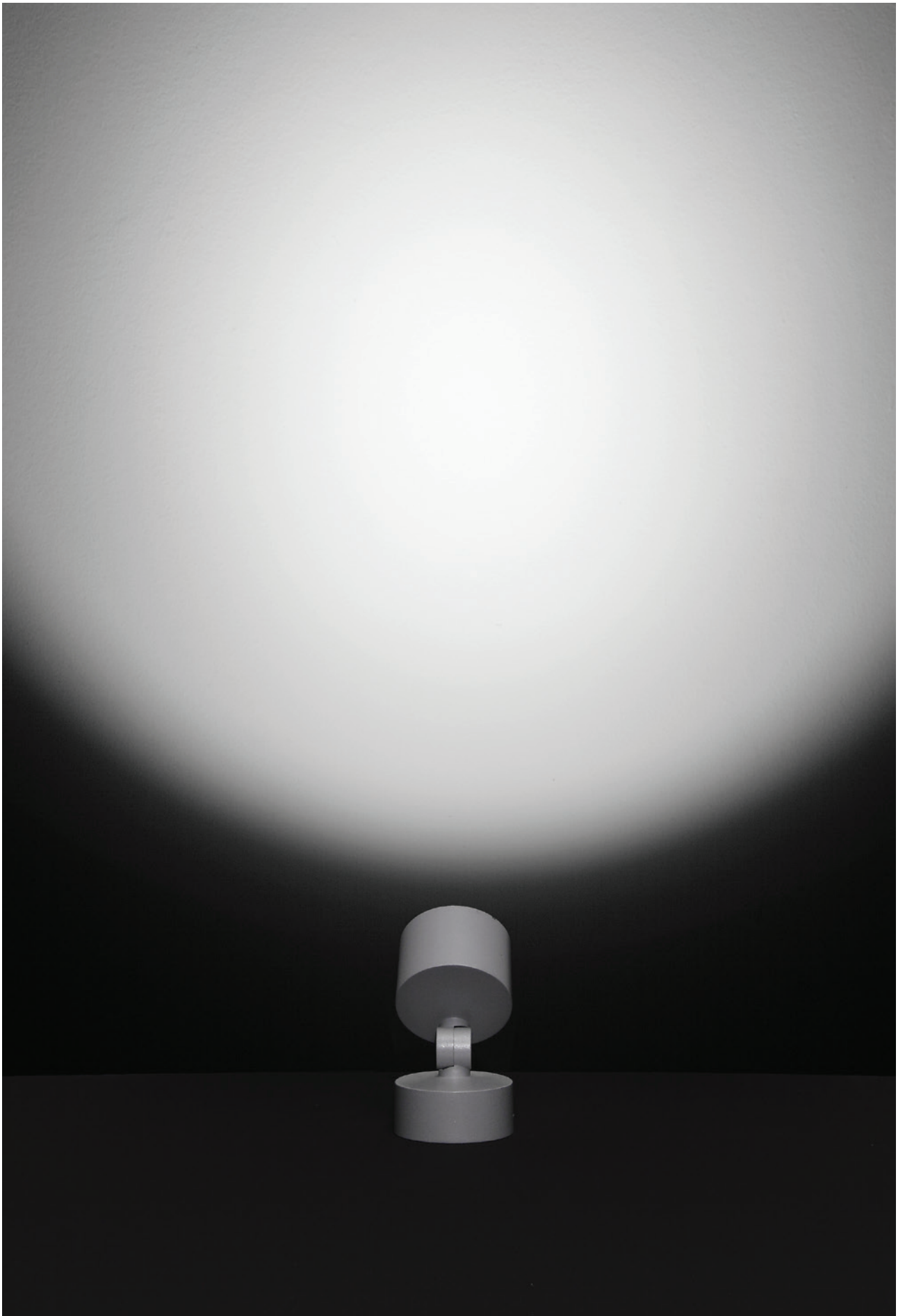


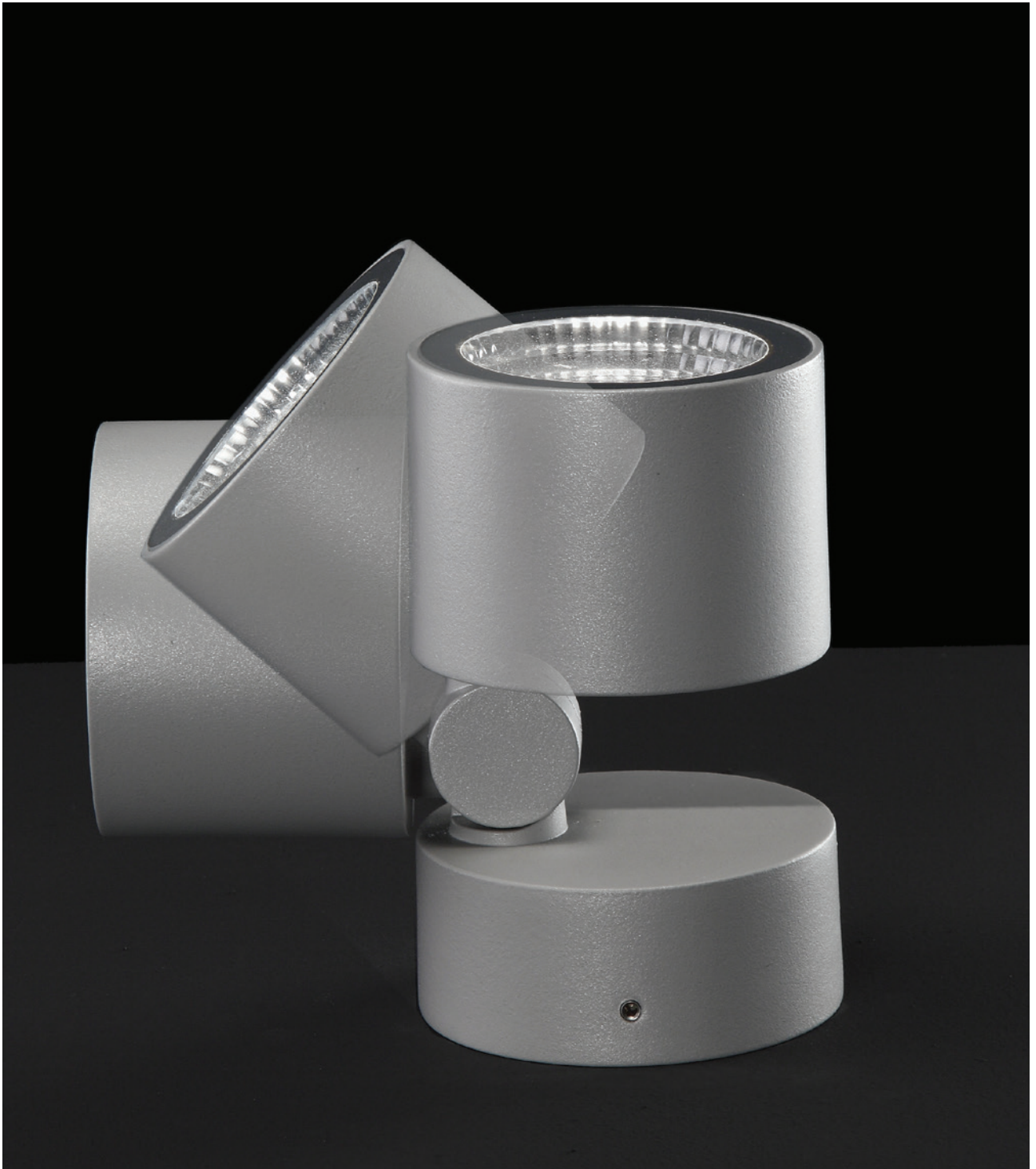
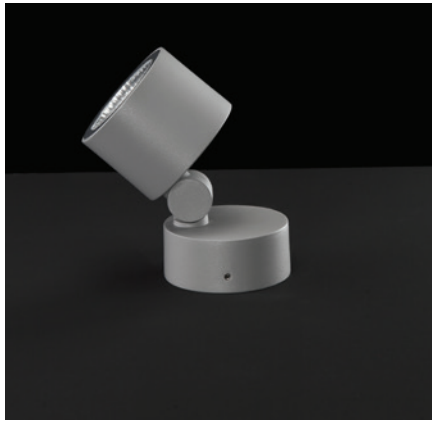
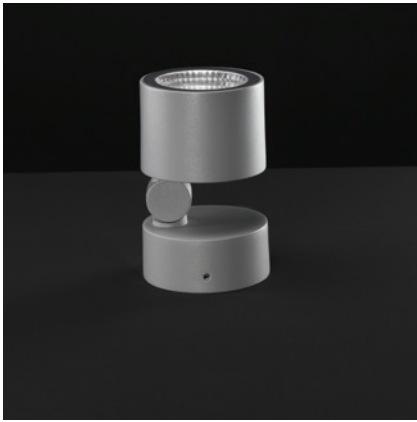
Kirk120 CoB LED / Adjustable - Medium Beam 40° - Direct 230V



540003.A A+ A++
 WARM WHITE 3000K
 CoB LED
 22W/220÷230V
 Total power 24W
 lm LED 2303 ≠ lm OUTPUT 1610
 CRI >80
 LED module set up to work directly connected to the mains

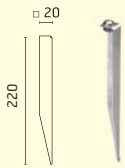




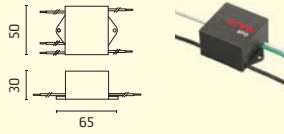


Accessories: Kirk

201
GROUND SPIKE - H 220mm



237
SPD: (SURGE PROTECTION DEVICE) 275Vac
MAXIMUM DISCHARGE CURRENT 10kA (8/20µs)
MAXIMUM OPERATING CURRENT 5A
SUITABLE FOR SERIES CONNECTION - IP66



acc. code ▶	201	237
prod. code ▼		
540001	•	•
540002	•	•
540003	•	•

