



- Spotlight for installation on wall, ceiling and floor or as a bollard light.
- Configuration: die-cast aluminium frame and cap, EN AB-47100 alloy (low copper content) and extruded aluminium structure/pole. Glass diffuser: transparent, fixed to the aluminium structure through a robotic gluing system. The wiring unit is fixed to the installation surface and is fully adjustable on the vertical axis, while the mitting unit is fixed to the wiring unit and has a +/- 135° rotation on the horizontal axis.
- Double layer coating for high resistance to corrosion: the aluminium components are painted with a double coat using powders which are compliant with QUALICOAT standards: a first layer of epoxy powder (with excellent chemical and mechanical resistance) and a second finishing layer of polyester powder (resistant to UV rays and atmospheric agents). The entire painting process of the aluminium fitting starts from components which have been sand-blasted in advance to make the surface more porous and increase the adherence of the paint. Ares effects alkaline and acid washing to clean the surfaces completely, then rinses with demineralised water to remove any residue particles, subsequently a chemical conversion treatment is done to protect against rusting.
- Protection rating: IP65.
- In compliance with EN60598-1 standards.
- Class of insulation: I.
- Installation: wiring through two cable holders (5mm\times9mm cable) and a quick connect terminal block. We recommend installation on a concrete basement or surface, directly with bolts or through a dedicated fixing plate (to be ordered separately). Outdoor use requires suitable flexible cables assuring the watertightness of the cable gland.

EU Regulation 874/2012 - Illumination equipment energy classes

A++
A+
A

LED VERSION:
Class A/A+/A++
Luminaire supplied with integrated LED modules that cannot be replaced



Ceiling lamp



Wall lamp



Floor installation

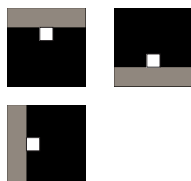


The fitting is equipped with 2 cable input \varnothing max 10 mm

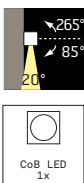
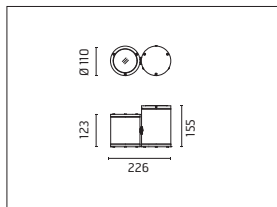
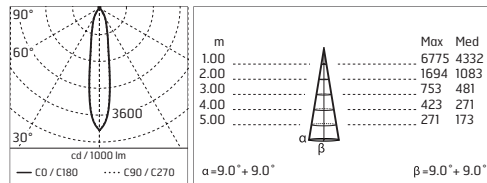


Protection against impact.
IK 07 - 2,00 joule

Pan CoB LED / Adjustable - Narrow Beam 20°

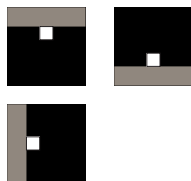


504011 **A A+ A++**
 NATURAL WHITE 4000K
 CoB LED
 12W/220÷240V
 Total power 15W
 Lm LED 1829 ≈ Lm OUTPUT 1641
 CRI>80
 Integral electronic power supply

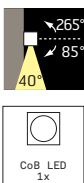
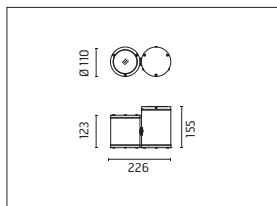
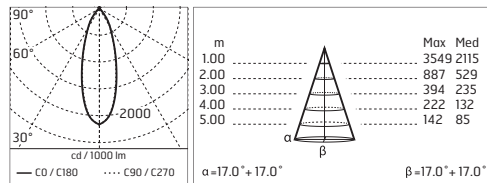


504012 **A A+ A++**
 WARM WHITE 3000K
 CoB LED
 12W/220÷240V
 Total power 15W
 Lm LED 1774 ≈ Lm OUTPUT 1564
 CRI>80
 Integral electronic power supply

Pan CoB LED / Adjustable - Medium Beam 40°



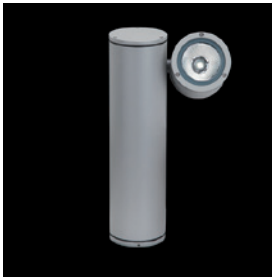
504008 **A A+ A++**
 NATURAL WHITE 4000K
 CoB LED
 12W/220÷240V
 Total power 15W
 Lm LED 1829 ≈ Lm OUTPUT 1628
 CRI>80
 Integral electronic power supply



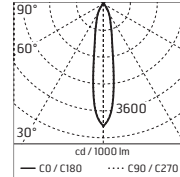
504009 **A A+ A++**
 WARM WHITE 3000K
 CoB LED
 12W/220÷240V
 Total power 15W
 Lm LED 1774 ≈ Lm OUTPUT 1552
 CRI>80
 Integral electronic power supply



Pan on Post CoB LED / Adjustable - Narrow Beam 20°

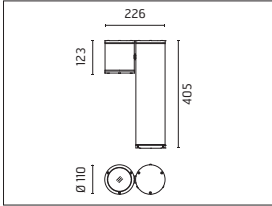


504026 **A A+ A++**
 NATURAL WHITE 4000K
 CoB LED
 12W/220÷240V
 Total power 15W
 Lm LED 1829 ≠ Lm OUTPUT 1641
 CRI>80
 Integral electronic power supply



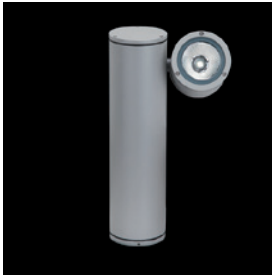
m	Max	Med
1.00	6775	4332
2.00	1694	1083
3.00	753	481
4.00	423	271
5.00	271	173

$\alpha = 9.0^\circ + 9.0^\circ$ $\beta = 9.0^\circ + 9.0^\circ$

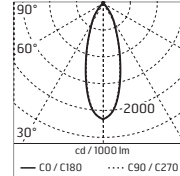


504027 **A A+ A++**
 WARM WHITE 3000K
 CoB LED
 12W/220÷240V
 Total power 15W
 Lm LED 1774 ≠ Lm OUTPUT 1564
 CRI>80
 Integral electronic power supply

Pan on Post CoB LED / Adjustable - Medium Beam 40°

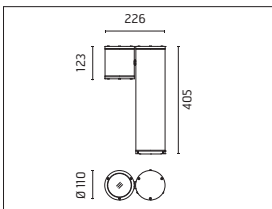


504023 **A A+ A++**
 NATURAL WHITE 4000K
 CoB LED
 12W/220÷240V
 Total power 15W
 Lm LED 1829 ≠ Lm OUTPUT 1628
 CRI>80
 Integral electronic power supply



m	Max	Med
1.00	3549	2115
2.00	887	529
3.00	394	235
4.00	222	132
5.00	142	85

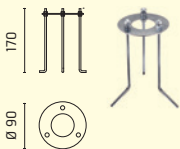
$\alpha = 17.0^\circ + 17.0^\circ$ $\beta = 17.0^\circ + 17.0^\circ$



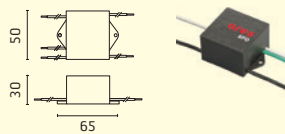
504024 **A A+ A++**
 WARM WHITE 3000K
 CoB LED
 12W/220÷240V
 Total power 15W
 Lm LED 1774 ≠ Lm OUTPUT 1552
 CRI>80
 Integral electronic power supply

Accessories: Pan

140
 BASE PLATE AND FIXING BOLTS
 Ø 90 x H 170mm



237
 SPD: (SURGE PROTECTION DEVICE) 275Vac
 MAXIMUM DISCHARGE CURRENT 10kA (8/20µs)
 MAXIMUM OPERATING CURRENT 5A
 SUITABLE FOR SERIES CONNECTION - IP66



acc. code	140	237
504008	●	●
504009	●	●
504011	●	●
504012	●	●
504023	●	●
504024	●	●
504026	●	●
504027	●	●