

# Caboche, sospensione

by Patricia Urquiola , Eliana Gerotto

FOSCARINI



## DESCRIPTION

Suspension lamp with diffused light. Acidetched finish blown glass internal diffuser, satin finish opaline glass lower screen. In the small version, single acid-etched finish blow glass internal diffuser. External diffuser consisting of a crown of polycarbonate arches secured to a chromed metal mount and PMMA spheres. Fitted with three stainless steel suspension cables for the medium and large versions, one for the small version, and transparent electrical cable. Ceiling rose with galvanised metal bracket and glossy chromed batch-dyed ABS cover. Canopy decentralisation kit available. Multiple canopy for small version up to 6 suspension lamps.

## MATERIALS

Polymethylmethacrylate, blown glass, chromed metal and aluminium (LED version)

## COLORS

Gold, Trasparent

# Caboche, sospensione

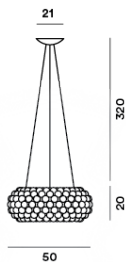
technical details

FOSCARINI

Resulting from the desire to create a precious and charming lamp like a pearl bracelet, accommodated with a focus on light weight and transparency thanks to the use of PMMA, Caboche established itself from the onset as one of Foscarini's best-selling products, and it has become a genuine icon in the world of lighting and design. Rich, bright and sophisticated, Caboche is a mosaic of refractions, a perfect fusion of different personalities in the one form, coming together to create the body and light effect of the lamp. When it is turned on, the light diffuses from inside the spheres like lots of bright crystals, providing 360° lighting of the surrounding environment and guaranteeing direct lighting on the underlying surface and reflection on the ceiling. This lighting emotion is also vouched by Led versions – affording high energy efficiency levels and durability - completely re-engineered in terms of lighting technology especially to ensure the same intensity, diffusion and temperature as the light produced by the original version. Caboche suspension lamp is a jewel of creativity and technology, available in three sizes and two versions: transparent and yellow gold. The lamp is the perfect protagonist for homes or public areas, uniting visual impact with lightness, decorative value and functionality.

## Caboche media LED

### SCHEMATIC & LIGHT EMISSION



### MATERIAL

Polymethylmethacrylate, blown glass, chromed metal and aluminium (LED version)

### COLORS



### LIGHT SOURCE

LED 35W

### CERTIFICATIONS



### ENERGY EFFICIENCY

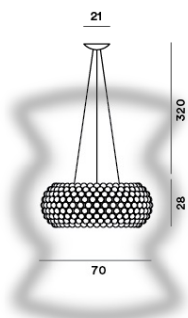
A+

### ACCESSORIES

Kit B

## Caboche grande

### SCHEMATIC & LIGHT EMISSION



### MATERIAL

Polymethylmethacrylate, blown glass, chromed metal and aluminium (LED version)

### COLORS



### LIGHT SOURCE

LED retrofit, Halo 1x 230W R7s

### CERTIFICATIONS



### ENERGY EFFICIENCY

A+, A, C

### ACCESSORIES

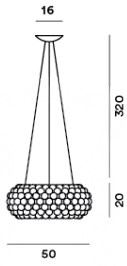
Kit B

Kit F

Kit M

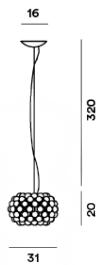
## Caboche media

SCHEMATIC & LIGHT EMISSION



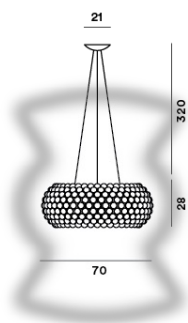
**Caboche piccola**

SCHEMATIC & LIGHT EMISSION



**Caboche grande LED**

SCHEMATIC & LIGHT EMISSION



MATERIAL

Polymethylmethacrylate, blown glass, chromed metal and aluminium (LED version)

COLORS



LIGHT SOURCE

LED retrofit, Halo 1x 160W R7s

CERTIFICATIONS



ENERGY EFFICIENCY

A+, A, C

ACCESSORIES

Kit B  
Kit F  
Kit M

MATERIAL

Polymethylmethacrylate, blown glass, chromed metal and aluminium (LED version)

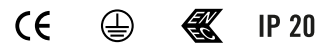
COLORS



LIGHT SOURCE

LED retrofit, Halo 1x 60W Dimmable G9

CERTIFICATIONS



ENERGY EFFICIENCY

A+, A, C

ACCESSORIES

Round multiple canopy  
Linear multiple canopy 90 cm  
Linear multiple canopy 135 cm  
Kit B  
Kit F  
Kit M

MATERIAL

Polymethylmethacrylate, blown glass, chromed metal and aluminium (LED version)

COLORS



LIGHT SOURCE

LED 46W  
LED 46W Dimmable

CERTIFICATIONS



ENERGY EFFICIENCY

A+

ACCESSORIES

Kit B

# Caboche, sospensione

Designer

FOSCARINI

PATRICIA URQUIOLA

An internationally renowned architect and designer, Patricia Urquiola has received multiple major acknowledgements such as the “Designer of the Decade” title from the Home and Häuser magazines, and “Designer of the Year” from Wallpaper, Ad Spain, Elle Decor International and Architektur und Wohnen Magazine.

Some of her projects are exhibited in several museums and collections. Together with Eliana Gerotto, industrial designer, curator of outfits and interior decorator, she has designed Caboche, a precious, luminous emotion that stems from a combination of technology and creativity.



# Caboche, sospensione

Designer

FOSCARINI

ELIANA GEROTTO

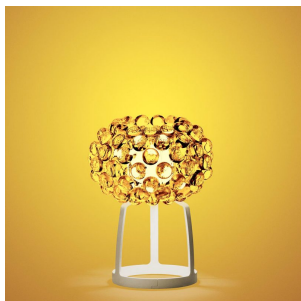
A Venetian, she obtained her diploma in Communication Techniques in Milan. She has worked as a graphic designer for the Parisian magazine, Elle, and for the Venice Biennale, while she co-operates with some major Italian brands as image and product consultant.

Her creative entrepreneurship drives her towards ever-differing professional experiences, from interior designs to furnishings and even jewellery. Together with Patricia Urquiola, she has designed Caboche, a precious, luminous emotion that stems from a combination of technology and creativity.

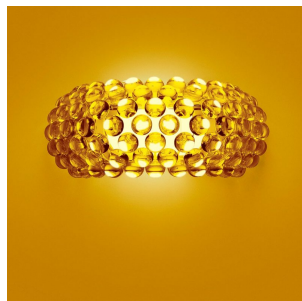


**Caboche, sospensione**  
family

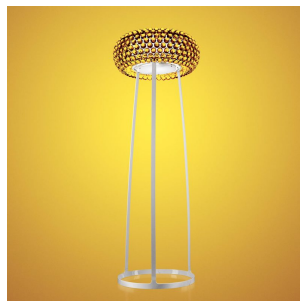
**FOSCARINI**



Caboche



Caboche



Caboche



Caboche