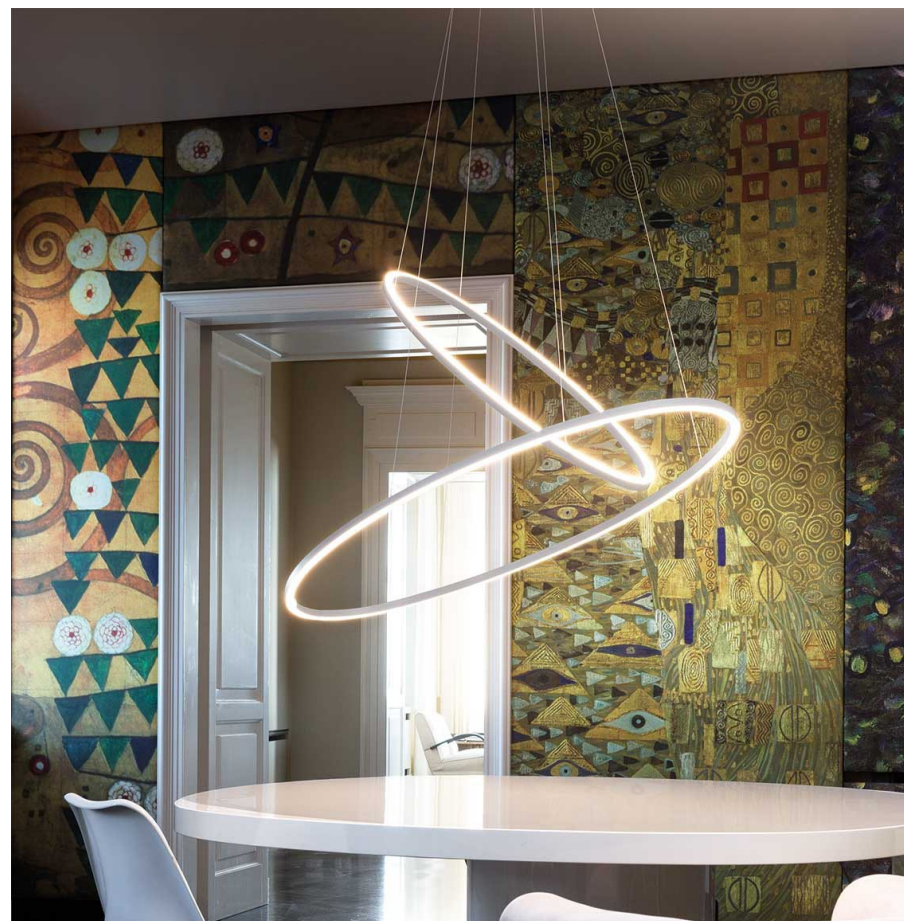


ELLISSE PENDANT DOUBLE

Federico Palazzari

LED pendant lamp, available in three versions: major, minor and double, widespread direct or indirect lighting. Extruded aluminium, matt white, matt black painted, polished or glossy gold anodized. Opaline diffuser. Ellisse is manufactured through a proprietary technology to combine the extruded bars (patent pending). Major version available also for wall and floor applications, with a marble base on the floor version and with a wall kit mounting on the wall one.



LED

LAMPING

Source	linear LED
Total power	90W
Emission	diffused uplight(minor), diffused downlight (major)
Switching	dimnable 1-10V
Tension	110/230V
Color temperature	3000K (gold version: 2700K)
Luminous flux	5400+3900lm
Typ cri	80
Energy class	A+
Materials	Aluminium
Notes	cable lenght 2,5m
Net lamp weight	5.5 Kg

Codes

ELP LWW 56
ELP LNW 56
ELP LGW 56
ELP LLW 56

Structure

white
black
gold polished anodized
polished aluminium

PACKAGE

Package 01 80x150x15 cm / Gross weight: 8 Kg

Certificazioni

