



SPOCK

- Adjustable projector for installation on ceiling, wall or floor.
- Configuration: die-cast aluminium structure, EN AB-47100 alloy (low copper content) and AISI 316L stainless steel fixing bracket. Glass diffuser: extra clear with silkscreen border, fixed through a robotic gluing system. The luminaire has three connected parts: wiring unit (silicone gasket), heat sink and emitting unit (silicone glue). A graduated fixing plate allows a precise adjustment of the emitting unit.
- Double layer coating for high resistance to corrosion: the aluminium components are painted with a double coat using powders which are compliant with QUALICOAT standards: a first layer of epoxy powder (with excellent chemical and mechanical resistance) and a second finishing layer of polyester powder (resistant to UV rays and atmospheric agents). The entire painting process of the aluminium fitting starts from components which have been sand-blasted in advance to make the surface more porous and increase the adherence of the paint. Ares effects alkaline and acid washing to clean the surfaces completely, then rinses with demineralised water to remove any residue particles, subsequently a chemical conversion treatment is done to protect against rusting.
- Protection rating: IP66.
- In compliance with EN60598-1 standards.
- Class of insulation: I.
- Installation: the luminaire is equipped with 1000mm of cable for an easy-to-make connection.
- We recommend the use of a connection system with a protection degree greater than or equal to the protection degree of the luminaire.

EU Regulation 874/2012 - Illumination equipment energy classes

A++
A+
A

LED VERSION:
Class A/A+/A++
Luminaire supplied with integrated LED modules that cannot be replaced



Floor installation



Wall fitting



Ceiling fitting

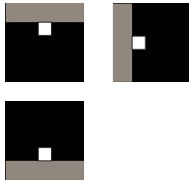


Pre-wired with approx 1000mm of cable

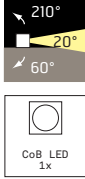
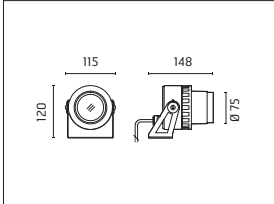
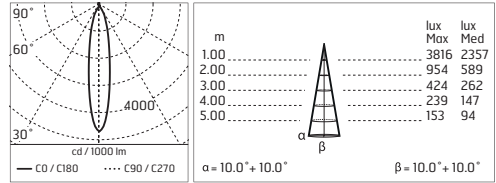


Protection against impact
IK 07 -2,00 joule

Spock75 CoB LED - Adjustable - Medium Beam 20°

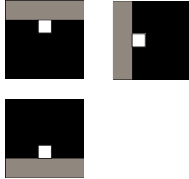


541002 **A A+ A++**
 NATURAL WHITE 4000K
 CoB LED
 9W/220÷240V
 Total power 12W
 lm LED 1124 ≠ lm OUTPUT 811
 CRI >80
 Integral electronic power supply

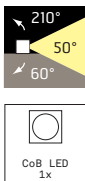
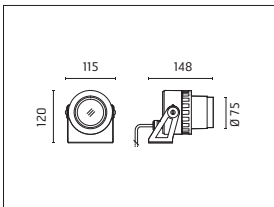
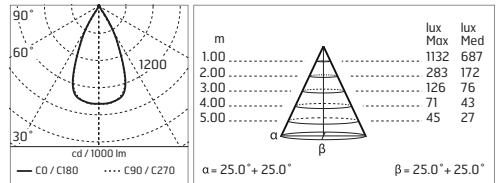


541003 **A A+ A++**
 WARM WHITE 3000K
 CoB LED
 9W/220÷240V
 Total power 12W
 lm LED 1081 ≠ lm OUTPUT 780
 CRI >80
 Integral electronic power supply

Spock75 CoB LED - Adjustable - Wide Beam 50°

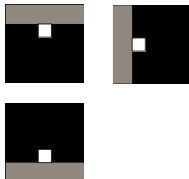


541005 **A A+ A++**
 NATURAL WHITE 4000K
 CoB LED
 9W/220÷240V
 Total power 12W
 lm LED 1124 ≠ lm OUTPUT 778
 CRI >80
 Integral electronic power supply

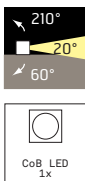
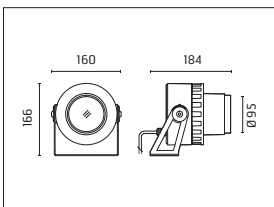
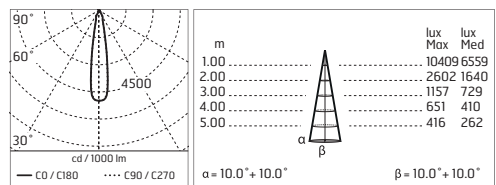


541006 **A A+ A++**
 WARM WHITE 3000K
 CoB LED
 9W/220÷240V
 Total power 12W
 lm LED 1081 ≠ lm OUTPUT 749
 CRI >80
 Integral electronic power supply

Spock95 CoB LED - Adjustable - Medium Beam 20°

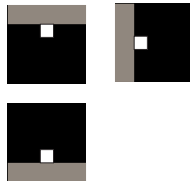


541007 **A A+ A++**
 NATURAL WHITE 4000K
 CoB LED
 24W/220÷240V
 Total power 29W
 lm LED 3408 ≠ lm OUTPUT 2415
 CRI >80
 Integral electronic power supply

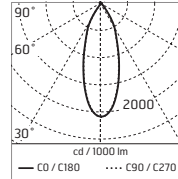


541008 **A A+ A++**
 WARM WHITE 3000K
 CoB LED
 24W/220÷240V
 Total power 29W
 lm LED 3249 ≠ lm OUTPUT 2302
 CRI >80
 Integral electronic power supply

Spock95 CoB LED - Adjustable - Wide Beam 40°

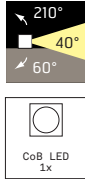
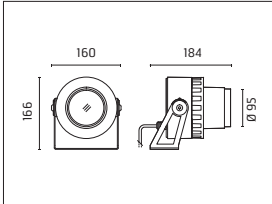


541009 **A A+ A++**
 NATURAL WHITE 4000K
 CoB LED
 24W/220÷240V
 Total power 29W
 lm LED 3408 ≠ lm OUTPUT 2428
 CRI >80
 Integral electronic power supply



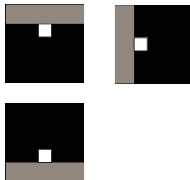
m	lux	
	Max	Med
1.00	5156	3044
2.00	1289	761
3.00	573	338
4.00	322	190
5.00	206	122

$\alpha = 20.0^\circ + 20.0^\circ$ $\beta = 20.0^\circ + 20.0^\circ$

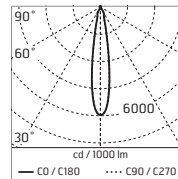


541010 **A A+ A++**
 WARM WHITE 3000K
 CoB LED
 24W/220÷240V
 Total power 29W
 lm LED 3249 ≠ lm OUTPUT 2315
 CRI >80
 Integral electronic power supply

Spock130 CoB LED - Adjustable - Medium Beam 20°

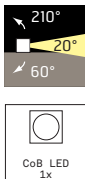
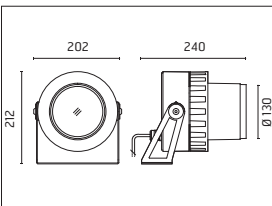


541011 **A A+ A++**
 NATURAL WHITE 4000K
 CoB LED
 45W/220÷240V
 Total power 52W
 lm LED 5963 ≠ lm OUTPUT 4477
 CRI >80
 Integral electronic power supply



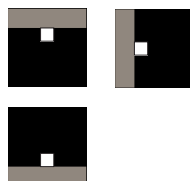
m	lux	
	Max	Med
1.00	26888	17059
2.00	6722	4265
3.00	2988	1895
4.00	1680	1066
5.00	1076	682

$\alpha = 10.0^\circ + 10.0^\circ$ $\beta = 10.0^\circ + 10.0^\circ$

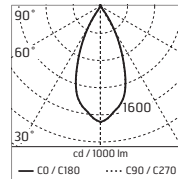


541012 **A A+ A++**
 WARM WHITE 3000K
 CoB LED
 45W/220÷240V
 Total power 52W
 lm LED 5815 ≠ lm OUTPUT 4365
 CRI >80
 Integral electronic power supply

Spock130 CoB LED - Adjustable - Wide Beam 45°

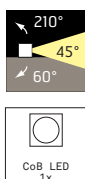
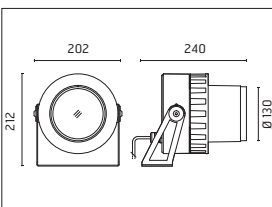


541013 **A A+ A++**
 NATURAL WHITE 4000K
 CoB LED
 45W/220÷240V
 Total power 52W
 lm LED 5963 ≠ lm OUTPUT 4390
 CRI >80
 Integral electronic power supply

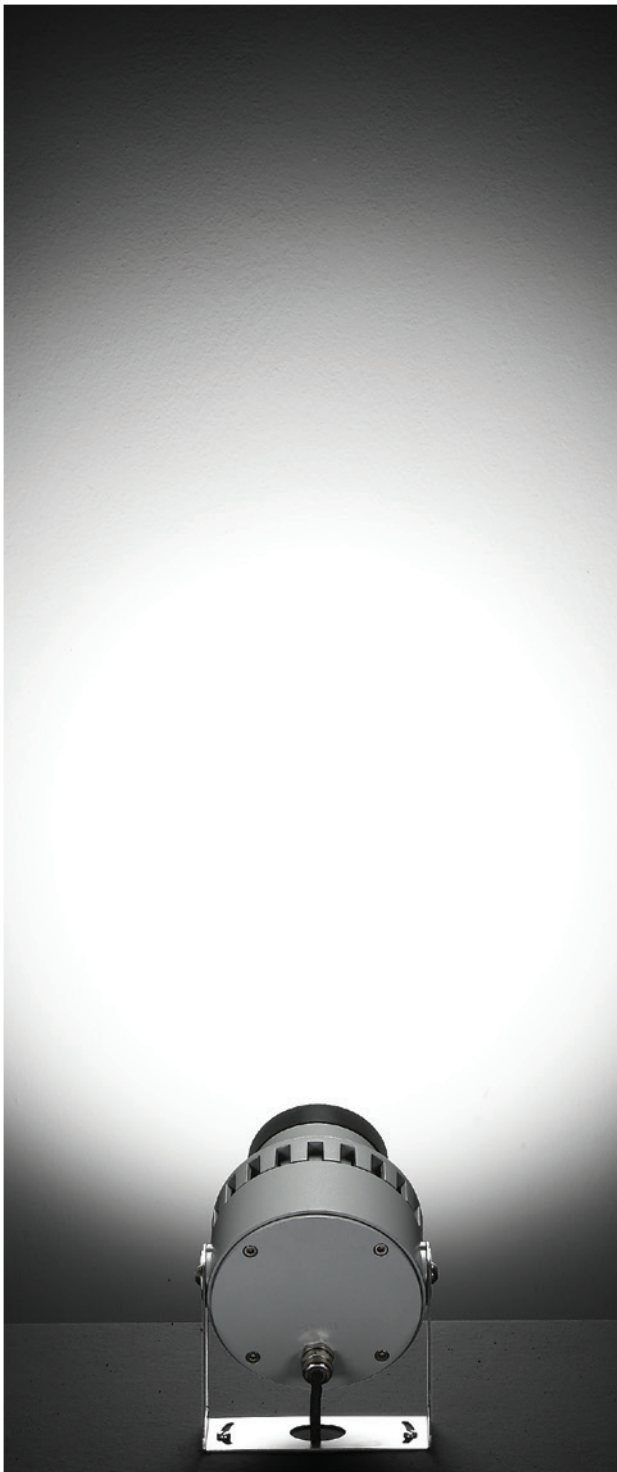


m	lux	
	Max	Med
1.00	7564	4354
2.00	1891	1089
3.00	840	484
4.00	473	272
5.00	303	174

$\alpha = 23.0^\circ + 23.0^\circ$ $\beta = 23.0^\circ + 23.0^\circ$



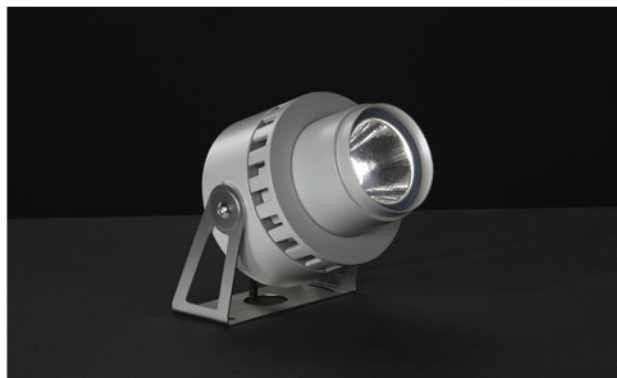
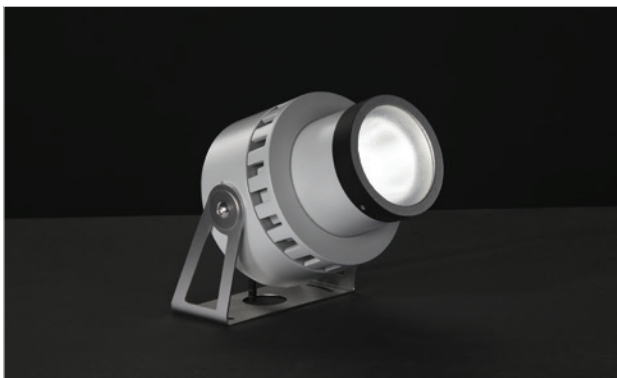
541014 **A A+ A++**
 WARM WHITE 3000K
 CoB LED
 45W/220÷240V
 Total power 52W
 lm LED 5815 ≠ lm OUTPUT 4281
 CRI >80
 Integral electronic power supply



SPOCK "FLOOD DIFFUSER"

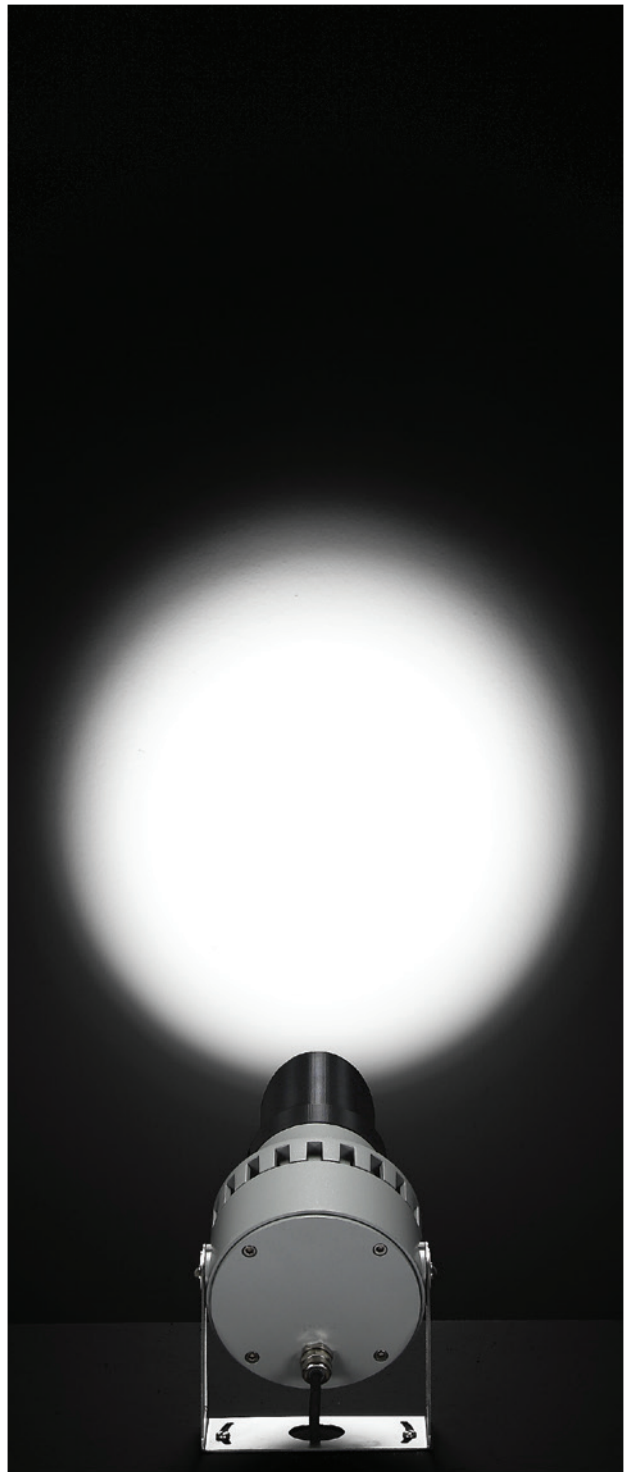


SPOCK "WIDE BEAM"

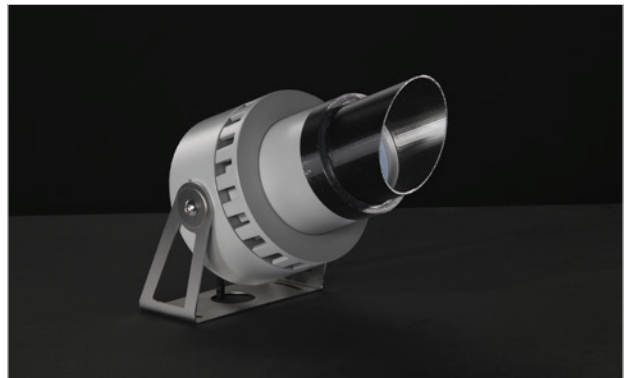
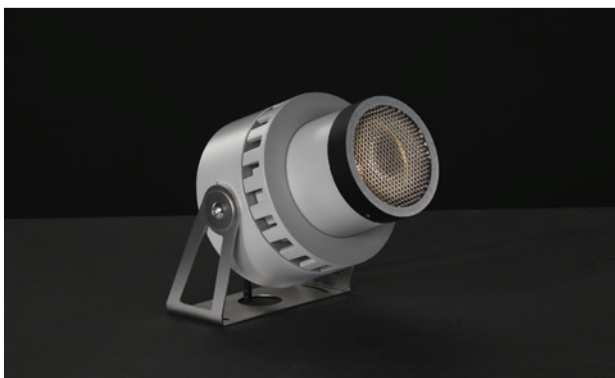


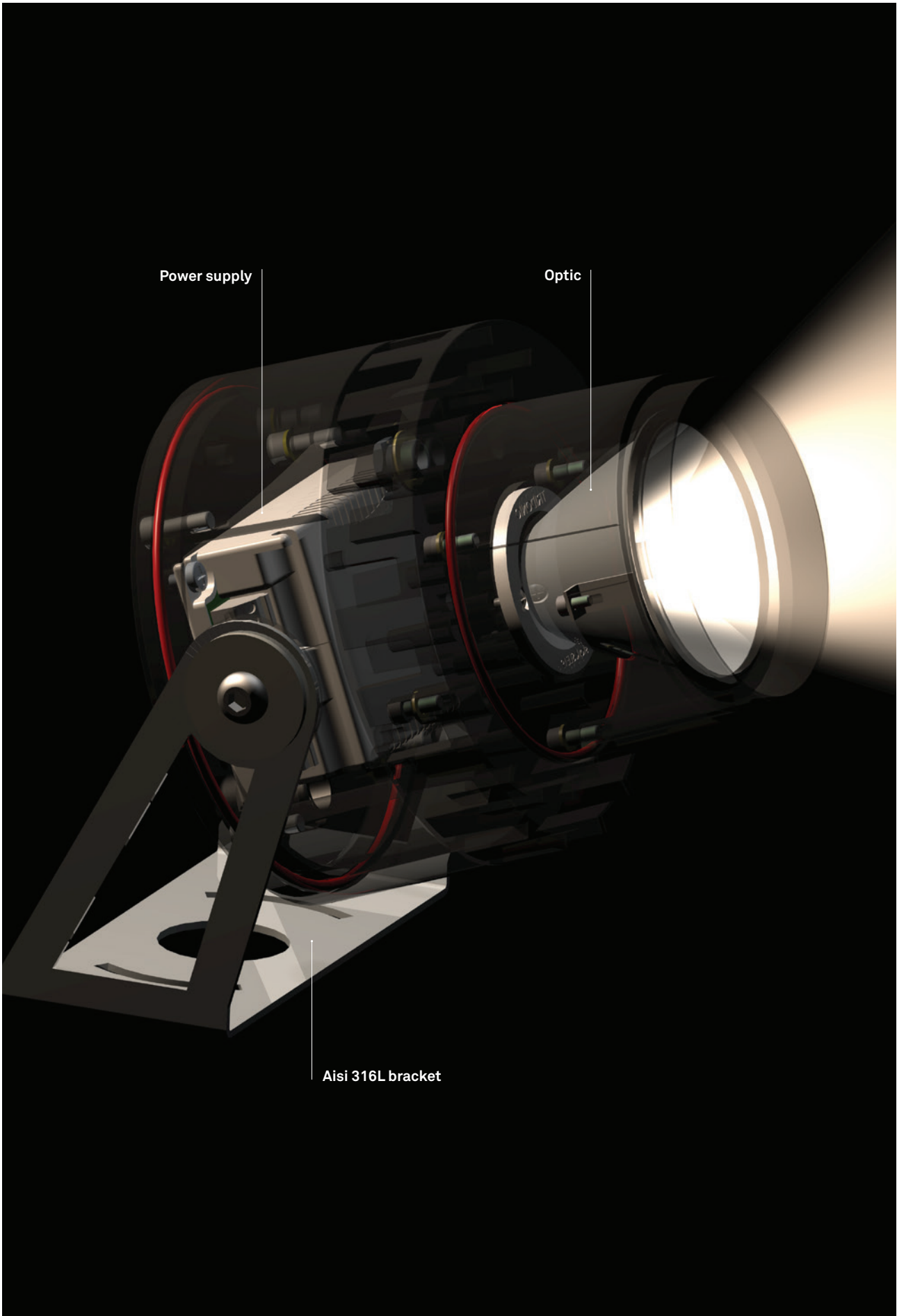


SPOCK "ANTI-GLARE LOUVRE"



SPOCK "VISOR"

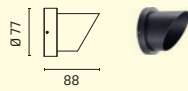




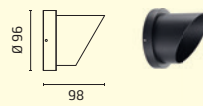
Accessories: Spock



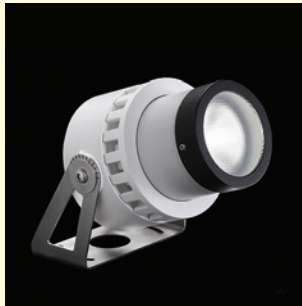
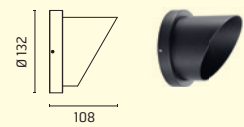
205
VISOR Ø 75



206
VISOR Ø 95



207
VISOR Ø 130



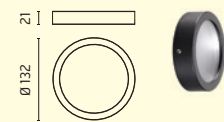
208
FLOOD DIFFUSER Ø 75



209
FLOOD DIFFUSER Ø 95



210
FLOOD DIFFUSER Ø 130



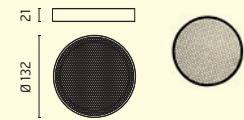
211
ANTI-GLARE LOUVRE Ø 75



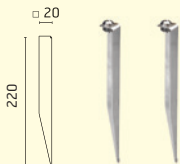
212
ANTI-GLARE LOUVRE Ø 95



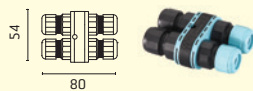
213
ANTI-GLARE LOUVRE Ø 130



203
KIT OF 2 GROUND SPIKES - H 220mm



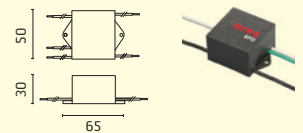
215
3/4 WAY TERMINAL BLOCK 3 POLES
IP68 H2O STOP (Ø5,5÷12mm CABLE)



236
2 WAY TERMINAL BLOCK 3 POLES
IP68 H2O STOP (Ø5,5÷12mm CABLE)



237
SPD: (SURGE PROTECTION DEVICE) 275Vac
MAXIMUM DISCHARGE CURRENT 10kA(8/20µs)
MAXIMUM OPERATING CURRENT 5A
SUITABLE FOR SERIES CONNECTION - IP66



acc. code ▶	205	206	207	208	209	210	211	212	213	203	215	236	237
prod. code ▼													
541002	•			•			•			•	•	•	•
541003	•			•			•			•	•	•	•
541005	•			•			•			•	•	•	•
541006	•			•			•			•	•	•	•
541007		•			•			•		•	•	•	•
541008		•			•			•		•	•	•	•
541009		•			•			•		•	•	•	•
541010		•			•			•		•	•	•	•
541011			•			•			•	•	•	•	•
541012			•			•			•	•	•	•	•
541013			•			•			•	•	•	•	•
541014			•			•			•	•	•	•	•